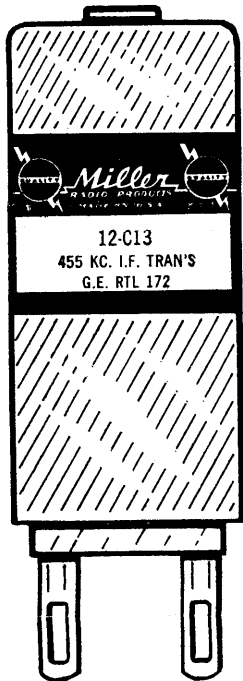




Miller



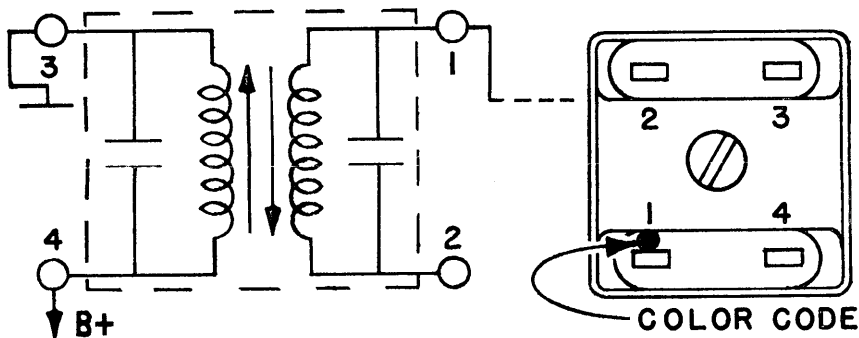
EXACT REPLACEMENT FOR GENERAL ELECTRIC RADIO

The 12-C13 has been manufactured as an exact replacement for the original equipment produced by General Electric.

Each part is supplied with a mounting clip.

MAX. DIMENSIONS: $\frac{3}{4}$ " Sq. x $1\frac{5}{8}$ " High

PART No.	USE	GENERAL ELECTRIC PART No.
12-C13	Home Radio 455 kc. I.F.	RTL-172



12 - C13, 12 - C11 FED. 5M 7-63

PRINTED IN U.S.A.

(Available through your local distributor)

J. W. MILLER COMPANY

5917 South Main Street

Los Angeles 3, Calif.

Exact Replacement for G. E. RTL-143,

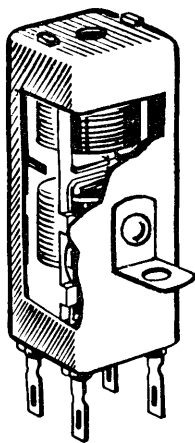
RTL-163

USED IN MODELS:

412F, 414F, 415F, 416F, 424, 425, 427,
428, 429, 442, 443, 444, 447, 465, 470,
475, 480, 590, 911, 920.

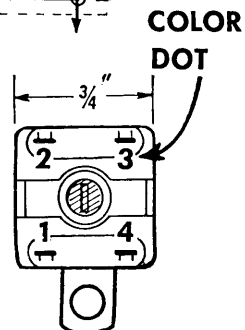
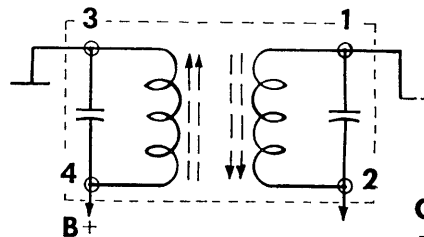
I.F. TRANSFORMER

SPECIAL
CAT. NO. 12-CII - 455 KC IF



J. W. MILLER COMPANY

5917 South Main Street Los Angeles 3, California



PRINTED IN U.S.A.